

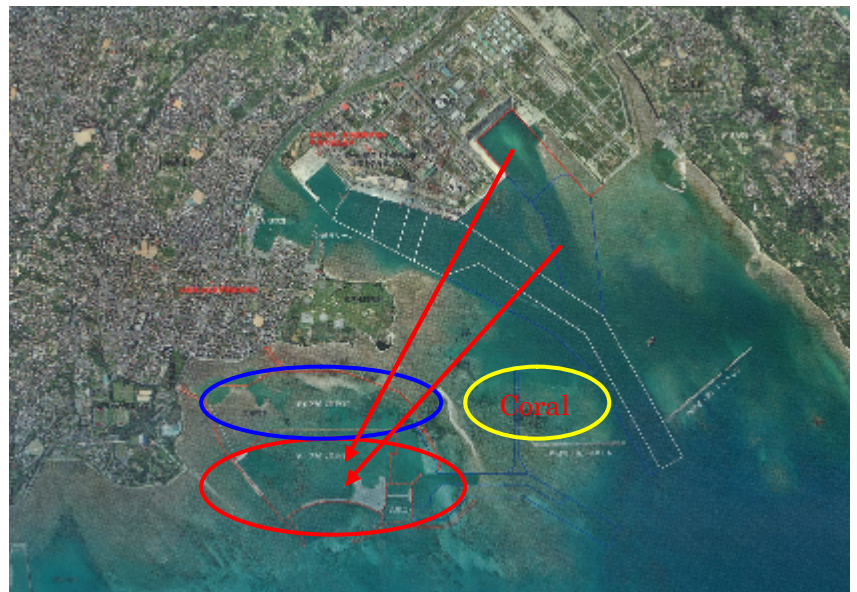
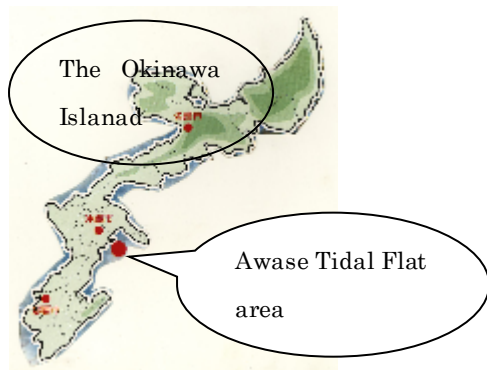
Problems regarding the Awase Tidal Flat area

by The Save-Awase-Higata Association

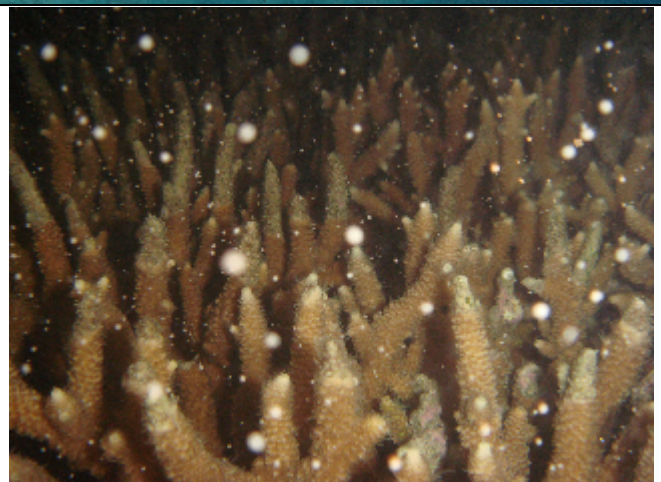
(HP : <http://www.awase.net/>, E-mail:save_awasehigata@yahoo.co.jp) 17th October 2008
(*Higata* means tidal flats in Japanese)

The Awase Landfill Project is to reclaim the expanding coastal wetland off the eastern coast in Okinawa City, covering 187ha. The red circle indicates the first phase of the landfill (96ha), and the blue circle indicates the second phase of the landfill (91ha).

The Okinawa General Bureau (the central government) and the Okinawa Prefectural government have been proceeding the first phase of the landfill plan. In the fiscal year 2007, the construction work of the revetment (seawall, bank protection) was completed. From 2009 it will be started to bring dredged soil (derived from another site for a harbor and a ship water cause) from a nearby municipality (The red arrow indicates the delivering route of dredged soil).



The red circle shows the landfill area. The yellow circle shows the habitat of newly found shellfish species *Semelangulus lacrimadugongi*, *Leucotina*. 'A' indicates the habitat of coral *Acropora aspera*; 'F' indicates coast protection for an artificial beach; and 'E' shows the water cause for ships.



Large communities of *Acropora aspera* were found but not mentioned in the previous EIA document by the governments.

Coral spawning of *Acropora aspera* was first recorded on June 8, 2007. This area is indicated with yellow circle. This place is going to be dredged in order to make a water cause for ships.